

Lenovo® recommends Windows.

THINKPAD® HELIX

lenovo FOR
THOSE WHO DO.

COMPUTING WITHOUT COMPROMISE.

A LAPTOP. A TABLET. 2-IN-1 CONVENIENCE WITH POWERFUL PERFORMANCE.




-  Laptop Mode
-  Stand Mode
-  Tent Mode
-  Tablet Mode
-  Desktop Mode

Office anywhere! 5-usage modes give you the most versatile 2-in-1 laptop you can imagine.

Stay productive on your terms with ThinkPad® Helix – a truly versatile 2-in-1 laptop engineered to adapt to where and how business professionals work. It's a laptop that delivers a full PC experience, but it's also an ultraportable ultrabook with detachable keyboard. It's computing without compromise – the latest Intel® Core M processors, 12-hours of battery life, powerful security and much, much more.


WHY BUY THE THINKPAD® HELIX?

1 UNPARALLELED VERSATILITY




2-in-1 means it's a full-featured ultraportable laptop and a super-convenient tablet, but you can take advantage of 5 convenient usage modes – tent, laptop, tablet, stand and desktop.

2 DURABILITY AND SECURITY




Advanced engineering, robust materials, and a keyboard with no moving parts make this a truly durable everyday performer for even the most demanding business use.

3 WORLD-CLASS BATTERY LIFE



No compromise means no stopping to recharge! The battery lasts 12+ hours without a recharge, so it goes as long as you do.

4 PRIMED FOR BUSINESS



This laptop is ready to do business with the latest Intel CPUs, Windows 8.1 and comprehensive connectivity, security features like SmartCard and Fingerprint support and optional accessories like a convenient Digitizer Pen.

1 Business people on the go who need a premium laptop with the flexibility to adapt to their productivity needs (with tent, laptop, table, stand and desktop modes).

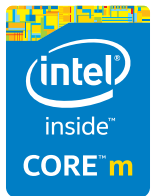
2 Executives who want a powerful business laptop that performs as well in the office as it does on the go or at home.

3 Corporate executives who need an ideal combination of mobility, performance, and security, with a full range of features and accessories to optimize ROI.

4 Prosumers and students who want a premium convertible they can use anywhere in any mode, for both work and entertainment.

5 Anyone who appreciates a premium laptop with features like FHD display, elegant design and accessories like the Lenovo® Pro Keyboard.

0800 123 1234
WWW.LENOVO.COM



Lenovo® recommends Windows.

lenovo FOR
THOSE WHO DO.

SPECIFICATIONS

PERFORMANCE

Processor

Intel® Core™ M-5Y10c Processor (4M Cache, up to 2.00 GHz)
Intel® Core™ M-5Y71 vPRO Processor (4M Cache, up to 2.90 GHz)

Operating System

Windows 8.1
Windows 8.1 Pro

Graphics

Intel® HD Graphics

Memory

4GB, 8GB DDR3L (1333 MHz)

Camera

2MP 1080p / 5MP

Storage (M.2 SSD)

128GB, 256GB⁴
180GB⁴, 240GB⁴, 512GB PCI

Audio

Dolby® Home Theater™ v4, Stereo Speakers, Digital Microphone

Battery¹

Tablet: 8 hrs / 35 Whr
With Keyboard Dock: 12 hrs / with 26 Whr

¹ Battery life (and recharge times) will vary based on many factors including system settings and usage. A description of the environment under which the test was performed is available upon request.
² Optional.
³ Tablet only.

⁴ OPAL 2.0 capable

DESIGN

Display

11.6" 16:9 FHD (1920 x 1080) IPS 400 nit (with optional Active pen or Digitizer pen support)

Dimensions

Tablet:
11.85" x 7.57" x 0.37"
(301.1 mm x 192.5 mm x 9.6 mm)
Tablet & Ultrabook Keyboard:
11.85" x 8.49" x 1"
(301 mm x 215.7 mm x 25.4 mm)
Tablet & Ultrabook Pro Keyboard
11.85" x 8.39" x 0.79"
(301.1 mm x 213.3 mm x 20.2 mm)

Weight

Tablet:
Starting 795g (1.75 lbs)
Ultrabook Keyboard:
500 g (1.10 lbs)
Ultrabook Pro Keyboard:
900 g (1.98 lbs)

Keyboard

Ultrabook keyboard,
Ultrabook Pro keyboard
Helix Folio Keyboard

CONNECTIVITY

I/O Ports

Tablet:
Micro HDMI, USB3.0, micro SD, micro SIM
With Ultrabook Keyboard²:
USB 2.0
With Ultrabook Pro Keyboard²:
USB 3.0, mDP

Communication

WLAN 802.11ac 2x2 with Bluetooth 4.0
WWAN (optional)
4G LTE Sierra EM7345
3G Ericsson N5321

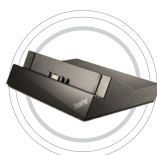
SOFTWARE

Lenovo® DOit Apps

- SHAREit
- SECUREit
- SYNCit
- SNAPit
- SEEit



ACCESSORIES



ThinkPad®
Tablet Dock



Anti-glare
and
Privacy filter



ThinkPad®
Helix
Protector



ThinkPad®
Active
Capacitive Pen

Recommended accessory - power and dock your Laptop with one cable.

LENOVO SERVICES

Lenovo® offers a comprehensive portfolio of services to support and protect your ThinkPad® investment. Succeed with substance and let Lenovo's Service support you all the way.

PRIORITY TECHNICAL SUPPORT*

Makes your priority, our priority. 24x7 priority call routing to advanced-level technicians, electronic incident tracking and escalation management services.

WARRANTY UPGRADES - ONSITE NEXT BUSINESS DAY

Maximizes PC uptime and productivity by providing convenient, fast repair service at your place of business.

WARRANTY EXTENSIONS (UP TO 5 YEARS TOTAL DURATION)

This fixed-term, fixed-cost service helps accurately budget for PC expenses, protect your valuable investment and lower the cost of ownership over time.

* Not available in all regions

ACCIDENTAL DAMAGE PROTECTION

Avoid the hassles of unexpected repair costs. Provides coverage for non-warranted damage incurred under normal operating conditions, such as minor spills, drops or damage to the integrated screen.

KEEP YOUR DRIVE

Retain your drive if it should happen to fail, giving you the peace of mind to know that your valuable data is secure.

ASSET TAGGING

Systems come equipped with a professional, flexible asset tag based on your exact specifications. PCs are easily identifiable and trackable right out of the box.

WHY THINKPAD®?

- 1 Engineered to endure** – Premium materials and layers of reinforcements protect your data even in extreme conditions.
- 2 The gold standard in reliability, since 1992** – Superior cooling, spill resistance and dust protection guard against system failure.
- 3 Thoughtful design inspired by you** – Every small detail is researched and crafted by our engineers for an enhanced user experience.
- 4 Award-winning ergonomic keyboard** – Precision keyboard design for better typing comfort and accuracy.
- 5 A new level in mobility** – Stylish multimode convertibles, tablets, ultra-mobile ultrabooks, performance laptops, mobile workstations: there's a ThinkPad® for every need.

0800 123 1234

WWW.LENOVO.COM

©2014 Lenovo. All rights reserved.

Availability: Offers, prices, specifications and availability may change without notice. Lenovo is not responsible for photographic or typographic errors. Warranty: For a copy of applicable warranties, write to: Warranty Information, 500 Park Offices Drive, RTP, NC, 27709, Attn: Dept. ZPYA/B600. Lenovo makes no representation or warranty regarding third-party products or services. Trademarks: Lenovo, the Lenovo logo, Rescue and Recovery, ThinkStation, ThinkVantage and ThinkVision are trademarks or registered trademarks of Lenovo. Microsoft, Windows and Vista are registered trademarks of Microsoft Corporation. Intel, the Intel logo, Intel Inside logo, Intel Atom and Intel Atom Inside are trademarks of Intel Corporation in the U.S. and/or other countries. Other company, product and service names may be trademarks or service marks of others. Visit Lenovo.com/safecomputing periodically for the latest information on safe and effective computing.

